

# OUR GEOTECHNICAL FUTURE IS NOW

## SIX EMERGING PROFESSIONALS WEBINARS

### BY EMERGING PROFESSIONALS

**REGISTER NOW**

**FRIDAY, AUGUST 11 | 11 – 11:30 AM | Zoom**



#### **Subsurface Explorations: Scoping, Overseeing, Implementing, and Laboratory (S.O.I.L.)**

*Luke Morrell, PE, Project Engineer II at Blackburn Consulting*

- Insight and resources for developing subsurface exploration plans
- Considerations to prioritize when supervising or performing an exploration
- Guidance for assigning and utilizing geotechnical laboratory testing
- Importance of each S.O.I.L. aspect for the success of the overall exploration

**FRIDAY, SEPTEMBER 8 | 11 – 11:30 AM | Zoom**

**REGISTER NOW**

#### **Overview of Shallow Landslide and Rockfall Mitigation Techniques**

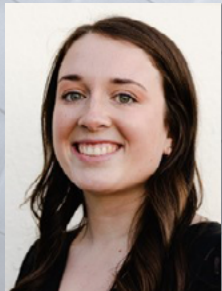
*Presty Paulose, PG, Staff Engineering Geologist at KANE GeoTech, Inc.*

- Rockfall and shallow landslide hazards and the factors that contribute to increased risks
- Reliable and cost-effective solutions for mitigation
- Comprehensive resources available for analysis and design
- Typical workflows of projects involving geohazards



**REGISTER NOW**

**FRIDAY, OCTOBER 13 | 11 – 11:30 AM | Zoom**



#### **Estimating Mining Reserves** *Lane Klansek, EIT, Associate Consultant at WSP USA*

- Goal: Estimate the quantity of rock reserves that could be extracted from an open pit mine to evaluate whether desired mine-life and production rates would be feasible
- Scope: Conduct geological mapping and drilling to characterize the mineralogy of the rock within the proposed mining area and identify faults and other waste zones that may impact mining reserves to estimate total economically attractive rock that could be mined for three commercial end uses

**FRIDAY, NOVEMBER 10 | 11 – 11:30 AM | Zoom**

**REGISTER NOW**

#### **Critical Need to Know Techniques for ChatGPT and Bard: Mastering Prompt Engineering**

*Bailey Uy, Engineer at Keller - North America*

Large language models (LLMs), deep learning algorithms trained on a large corpus of text data, can process and generate human-like text on most topics. As Bard (by Google) and ChatGPT (by OpenAI), the primary publicly available LLMs, have distinct differences, this presentation contrasts the advantages Bard and ChatGPT each provide for engineering applications.



**REGISTER NOW**

**FRIDAY, DECEMBER 8 | 11 – 11:30 AM | Zoom**



#### **Addressing Liquefaction for a Multi-Family Residential Structure in Irvine**

*Jose Cejudo, Staff Engineer at Geocon West, Inc.*

This presentation addresses:

- Seismic hazards and settlement issues at the site
- Liquefaction analysis performed using Cone Penetration Testing (CPT)
- Project solutions that avoided overdesign and controlled cost

**FRIDAY, FEBRUARY 9 | 11 – 11:30 AM | Zoom**

**REGISTER NOW**

#### **Journeying Beyond the Office: A Remote Project Experience and Lessons Learned**

*Harpreet Gill, EIT, Associate Consultant at WSP USA*

This presentation explores:

- Experience from doing field work at a remote mine in Alaska
- Challenges encountered
- Lessons learned

